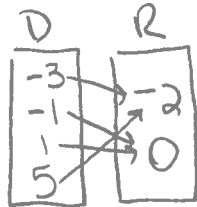


Pre-Algebra
U7L1 (8-1) Practice

Name: KEY

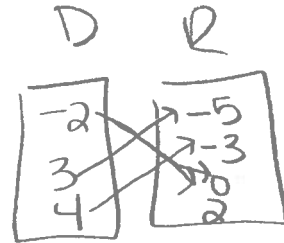
1. Draw a mapping diagram of the following relations. Then, decide if each relation is a function and explain why or why not.

a. $\{(-3, -2), (-1, 0), (1, 0), (5, -2)\}$



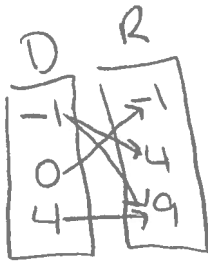
yes
each x
has one y

c. $\{(3, -5), (-2, 0), (4, -3), (-2, 2)\}$



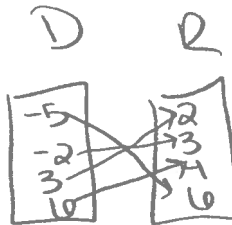
no
-2 → 0
-2 → 2

b. $\{(-1, 9), (0, -1), (-1, 4), (4, 9)\}$



no
-1 → 4
-1 → 9

d. $\{(-5, 6), (-2, 3), (3, 2), (6, 4)\}$



yes
each x
has one y

2. Is the price of a one-year subscription to your favorite magazine a function of the age of the subscriber? Explain.

D: age of subscriber

R: price of subscription

no
price does
not depend on
age

3. Is the length of a rectangle a function of the area of the rectangle?

D: area

R: length

no
area depends on length.

4. Is the price of stamps a function of how many stamps your purchase?

D: # stamps

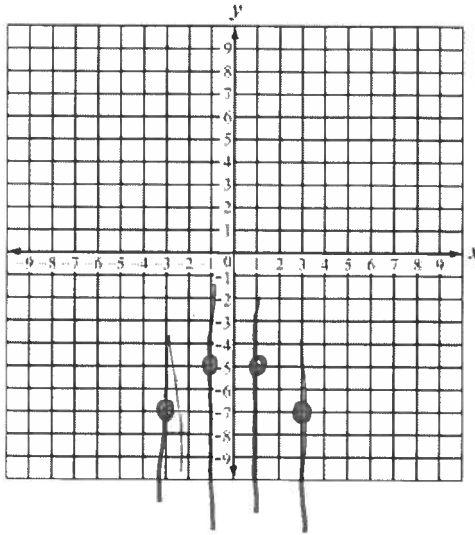
R: price

yes
• price depends on #
• each # has different price

5. Graph each relation. Is the relation a function? Explain.

a.

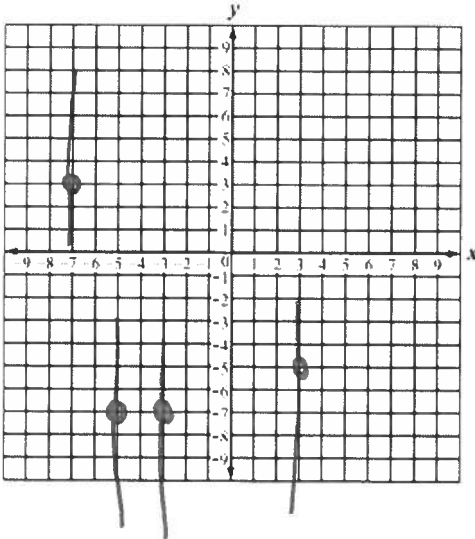
x	y
3	-7
1	-5
-1	-5
-3	-7



yes
each vertical
line hits
only one
point

b.

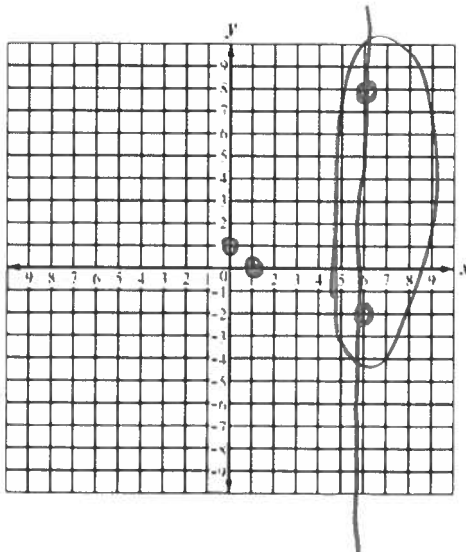
x	y
-7	3
-5	-7
3	-5
-3	-7



yes
each vert
line hits
only one
point

c.

x	y
6	-2
1	0
0	1
6	8



no
vert line
hits two
points